



INTERNATIONAL STUDENT PROGRAM ORIENTATION HANDBOOK



Map of Australia



CAPITAL CITIES

VICTORIA—Melbourne

NSW—Sydney

ACT—Canberra

QUEENSLAND—Brisbane

SOUTH AUSTRALIA—Adelaide

WESTERN AUSTRALIA—Perth

NORTHERN TERRITORY—Darwin

About Australia

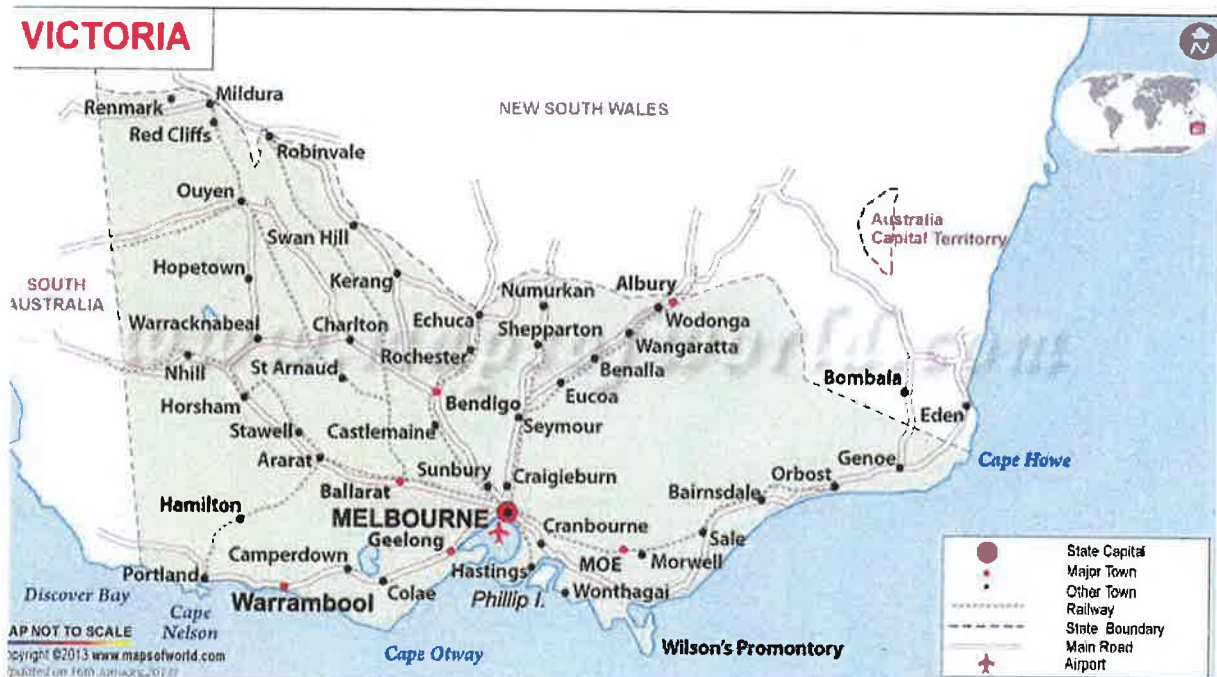
Melbourne, one of the world's most liveable cities, is the capital of Victoria, Australia

Melbourne enjoys a temperate climate with warm to hot summers, mild and sometimes balmy springs and autumns, and cool winters

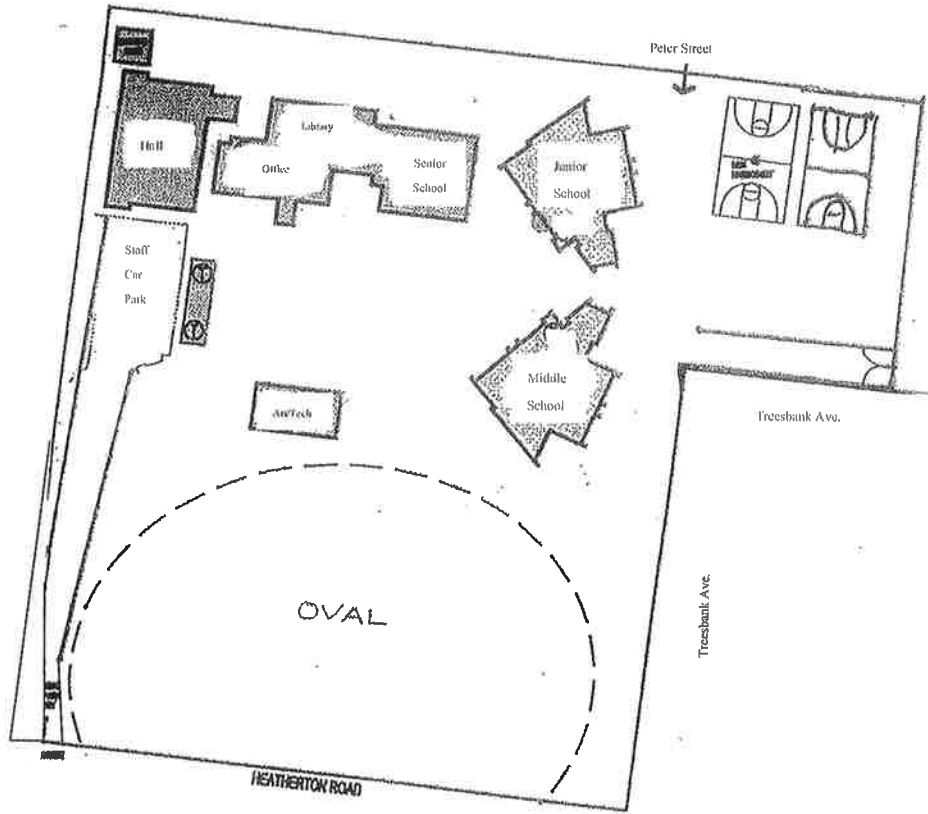
Melbourne's appeal is the emotion, feeling and memory of experience built around the city's distinctive physical characteristics:

- an unusual street and laneway network
- the Yarra River
- parks and gardens of renown
- transport infrastructure which includes an extensive tram network
- beautiful heritage buildings and cutting-edge new structures

Melbourne has a population of 4.25 million, it is home to people of 140 different cultures: indigenous Australians, post war European migrants, and recent arrivals from India, Vietnam, China, Cambodia, Somalia, Malaysia and beyond.



Heatherhill Primary School Map



Heatherhill Primary School

School Requirements

Attendance Requirement

International students are expected to attend at least 95% of scheduled classes. The school must be notified of any absences. Please call 9546 8811.

Late arrival

If a student is late to school for any reason he/she must get a late pass from the Office

Early leaver

If a student needs to be collected school early a parent/guardian/carer must obtain a consent form from the school Office

Holiday Plans

To fulfil the 95% attendance requirements, an International student is expected to attend all scheduled classes. Holiday plans must be made as not to interfere with school days.

The International Student Coordinator must be notified, in writing, of all holiday plans that involve travelling interstate or overseas.

Visa Information

Personal details – we must always have your correct details on file

Study program – you must be engaged in a full time study program and you must maintain satisfactory grades

Attendance – you must attend a minimum of 80% of classes, and college program activities. Your attendance is checked every lesson and this is entered onto the computer system.

Changes to Visas

The School Administration must be notified of any changes to your visa.

Emergency Contacts

Emergency	Police , Ambulance, Fire Telephone: 000
Heatherhill Primary School	Telephone: 03 9546 8811 Fax: 9558 5672
Principal	Mrs Mary Verwey
Assistant Principal	Miss Gillian Harris
International Student Contact	Mrs Louise McLelland

Travel & Transport Systems

Travel to Heatherhill Primary School

959 Heatherton Road, Springvale, 3171

Visit Melbourne public transport web site : www.ptv.vic.gov.au

Public Transport Heatherhill Primary School:

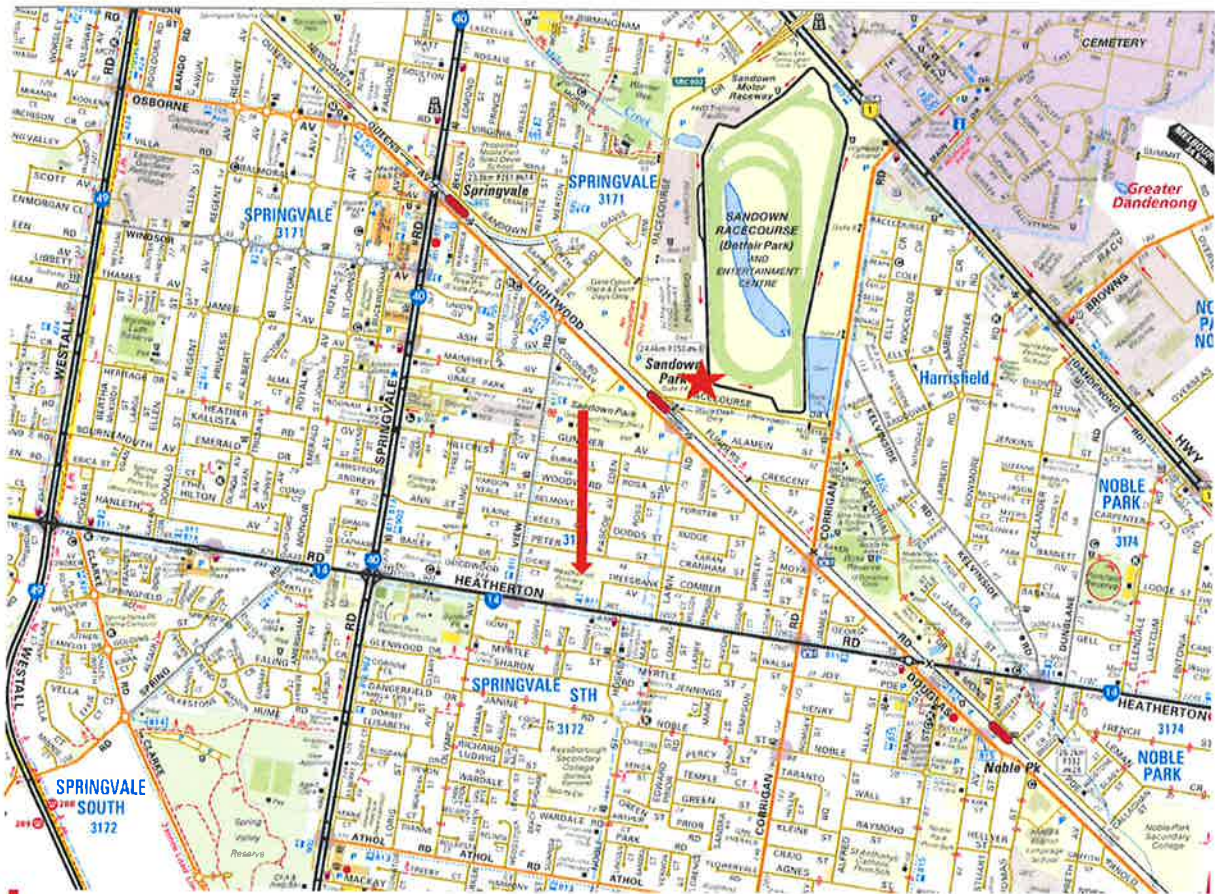
- Train – closest stations: Springvale, Sandown Park
- Buses – Bus Route 814
 - Ventura Buses <http://venturabus.com.au> Telephone 1300VENTURA
-

Myki Card: The card price for a full fare is \$6 and \$3 for a concession. You can buy your Myki at Springvale Railway Station or from a Myki machine located at all train stations. Myki is your ticket to travel on Melbourne trains, trams and buses. The reusable smart card is easy to use. Simply top up before your journey and then touch on and touch off at a Myki reader as you travel.



International Student visa holders are not eligible to hold travel concession cards. Students who are 16 years of age or under can purchase concession fares.

Directions and Local Area



↓ Heatherhill PS

★ Sandown Park Railway Station

Melbourne Train Network

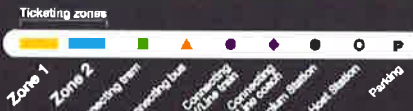
Please take note of Flinders Street Station and the Melbourne Loop Stations (circled)



↑ NORTH
 MAP NOT TO SCALE
 Effective 28 April 2013

Information

For more information visit ptv.vic.gov.au or call 1800 800 007 (9am - midnight daily)



Premium Stations:
 Customer service centre is staffed from first train to last, seven days a week.

Host Station:
 Customer service staff at station during morning peak.

*Flagstaff Station is closed on weekends and public holidays.
 †Lina to Showgrounds and Flemington Racecourse is only open for special events.
 © Public Transport Victoria 2013